

JUNIOR CARG PRESENTS: CAREER DEVELOPMENT WORKSHOP

BEYOND BOUNDARIES: NAVIGATING
THE INTERSECTIONALITY OF CANCER,
AGING, AND DIVERSE IDENTITY

TUESDAY, OCTOBER 24TH, 2023



AGENDA

- Welcoming Remarks (10 mins)
- Keynote Presentation
 - Dr. Marquita Lewis-Thames (20 mins)
 - Q&A (10 mins)
- Breakout Rooms (40 mins)
 - Specific Aims Review
 - Specific Aims Q&A
 - Transition from Early to Mid-career
 - Resilience and Work/Life Balance
- Closing Remarks (10 mins)

CARG Infrastructure Grant (CARinG)

2R33AG059206 (Renewal)

MPI: W. Dale [COH], S. Mohile [University of Rochester], H. Klepin [Wake Forest University]



William Dale, MD, PhD



Supriya Mohile, MD, MS



Heidi Klepin, MD, MS

Overall Goal: Develop a sustainable national research infrastructure to create and support significant and innovative projects addressing key interdisciplinary research questions at the aging and cancer interface.

- **Increase high-impact research** to reliably identify older patients at highest risk for adverse outcomes from cancer and its treatments;
- **Develop effective interventions** to improve outcomes for vulnerable older adults and their caregivers;
- **Mentor the next generation** of aging and cancer researchers;
- **Disseminate the findings** widely to inform clinical practice



Nikesha Gilmore, PhD
Junior CARG Co-Chair

WELCOMING REMARKS

JUNIOR CARG BOARD MEMBERS



Shakira Grant Co-Chair, MBBS



Katherine Clifton, MD



Melody Schiaffino, PhD MPH



Mohammed Al-Jumayli, MD



Sindhuja Kadambi, MD, MS



Tanyanika Phillips, MD, MPH



Cara McDermott, PharmD, PhD



Jessica Krok-Schoen, PhD



Manvi Sharma, PhD, MS



Meghan Karuturi, MD



Melissa Loh, BMedSci., MBBCh, BAO, MS



Shelley Bluethmann, PhD, MPH

OUR MISSION

The Junior Faculty Board is committed to fostering an inclusive environment for junior researchers of all backgrounds allowing them to engage in clinical activities, research, and advocacy efforts that aim to eliminate ageism combined with racism, sexism, bias against sexual and gender minorities, xenophobia, ableism, and other forms of discrimination that diminish access to quality care for older adults with cancer and their caregivers.



KEYNOTE SPEAKER

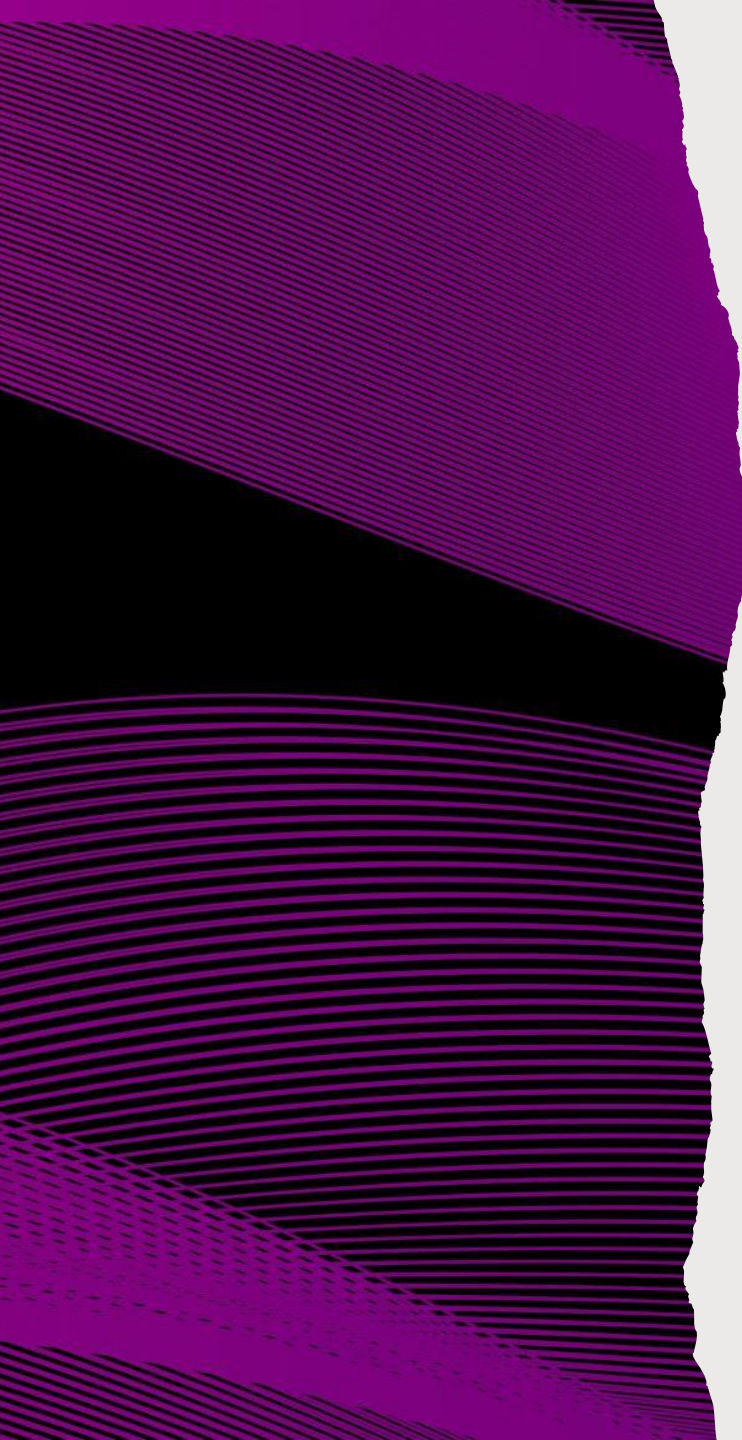


Marquita Lewis-Thames, PhD

Assistant Professor of Medical Social Sciences (Determinants of Health)

Pronouns: she, her, hers

The foundation of my research is a belief that the solutions for community health problems are found within the community. I am a community-engaged health disparities researcher with an interest in chronic and cancer disease management for rural and African-American populations.



Advancing community engagement and equity in rural cancer control

Marquita Lewis-Thames
CARG Career Development
October 24, 2023

Our Objective



DESCRIBE HOW I USE COMMUNITY-ENGAGED RESEARCH TO INCREASE INCLUSION AND BELONGINGNESS



IDENTIFY ACTIVITIES FOR ESI'S TO BUILD COMMUNITY-ENGAGED RESEARCH CAPACITY



USE MY CAREER DEVELOPMENT AS A CASE STUDY



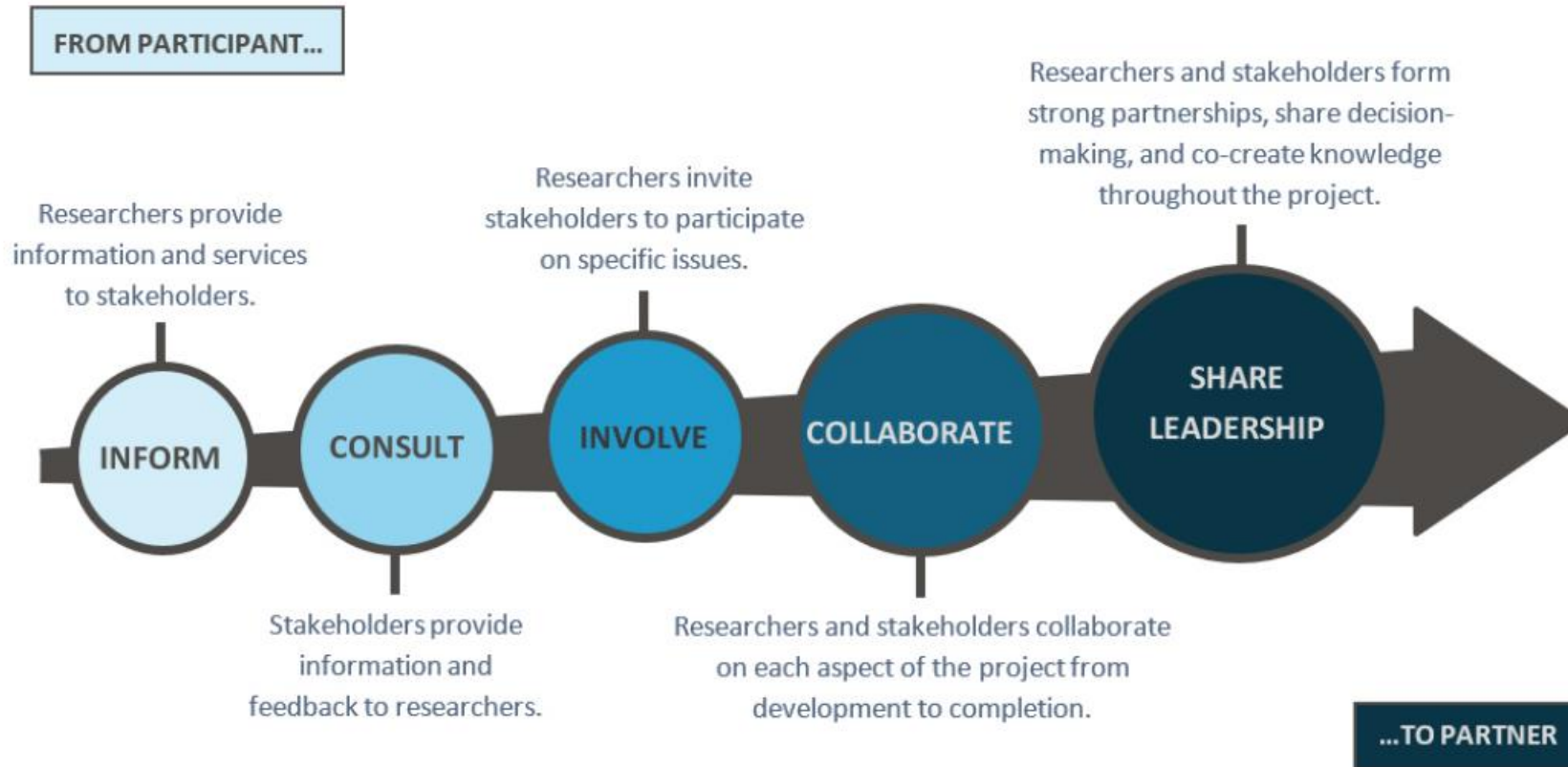
Why community-engaged for me?

Community Engaged Research

- Approach for conducting research in a collaborative way
- **Bidirectional exchange** of expertise between academics (scientific experts) and communities/stakeholders (local, cultural, practice experts) that **results in informed decision-making about design/conduct/use of research.**

Levels of Engagement

Exhibit 1. Continuum of stakeholder participation



What do I mean by equity?

All those who are affected by research or who can benefit from its outcomes, should have equal opportunities to contribute to it.

What animals do you see?



Challenges for building community- engaged research capacity for ESIs

- A. How to fund it
- B. Where do I find partners
- C. How do I find my partners
- D. It takes too much time
- E. My department won't value it
- F. How do you publish on it
- G. What kind of grants fund it



Career development and community-engaged activities timeline

University of Alabama at Birmingham

- MPH, PhD health education/health promotion
- RA for diabetes management and peer support R01



- ◆ CBPR introduction
- ◆ Trained and coordinated CHWs

Washington University in St. Louis

- T32 in Cancer Prevention and Control
- Rural cancer resource needs assessment pilot



- ◆ Recruitment with community coordinator
- ◆ Community partner co-author

- Research Assistant Professor
- Respiratory Health Association pilot award



- ◆ Included partnership building in my salary grid
- ◆ Building relationships with affiliated cancer centers

Northwestern University

- Awarded NCI K01
- Pepper pilot award
- Transition to Assistant Professor
- Assistant Director of COE

2021-2022

- ◆ User-centered design
 - ◆ CAB
 - ◆ IRT
- ◆ Community health workers
- ◆ Advocacy through mentorship and consultations

2023

- Community-led award project
- R01 proposal

- ◆ Trained community members in qual and IRB
- ◆ Co-design approach

Career development and community-engaged activities- **UAB**



Career Development

- MPH (Health Behavior)
- PhD (Health Education/ Health promotion)
- RA for rural peer support diabetes management R01s

Community-engaged activity

- As a RA
 - In-house biometric data collection
 - Trained and coordinated community key informants
 - Published research on intervention fidelity of community-engaged intervention

Career development and community-engaged activities- **Washington University**



Career Development

- T32 in Cancer Prevention and Control
- Rural cancer resource needs assessment pilot

Community-engaged activity

- Conducted a cancer resource community needs assessment
 - Identify community partners for recruitment
 - Co-authored with community partner

Career development and community-engaged activities- Northwestern University



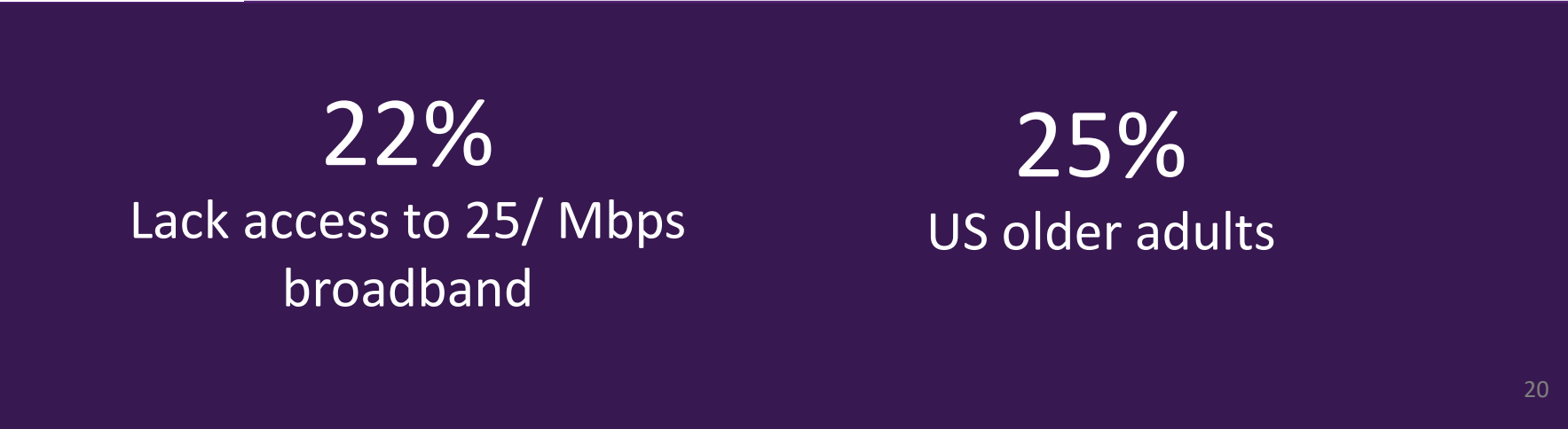
Career Development

- Position
 - Research Assistant Professor: 2019-2021
 - Assistant Professor: 2022-2023
- Awarded
 - Respiratory Health Association
 - National Cancer Institute (K01)
 - NU Pepper Center Pilot

Community-engaged activity

- Conducted a cancer resource community needs assessment pilot
 - Funded pilot from Respiratory Health Association
 - Identify community partners for recruitment
 - Co-authored with community partner
- Developed a Community Advisory Board
- Developed an Implementation Resource Team

Burden of rurality



Aging...Cancer....Anxiety and Stress

- **Cancer related distress** is a complication of cancer that includes psychological distress or anxiety arising from a diagnosis or disease management.



Telehealth has the potential to improve access to cancer care and mental health supports



Problems and Gaps

Problems



Rapid acceleration of telehealth uptake



Usability barriers



Digital inequities

Gaps

- Assessment of telehealth usability barriers
- Tools to improve telehealth usability
- Tools to improve assessment cancer-related distress

Research Aims



Aim 1: Learn about the facilitators and barriers of when accessing telehealth and mental support services.



Aim 2: Develop tool prototype



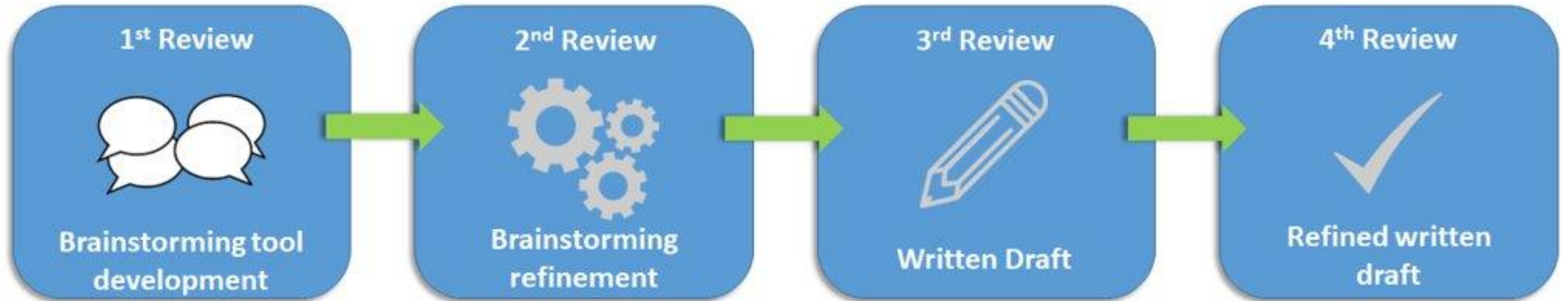
Aim 3: Test the usability of the tool

An aerial night view of a city skyline, likely Chicago, with numerous illuminated skyscrapers and buildings. A white text box is overlaid on the left side of the image, containing the main title and a list item. The background shows a dense urban landscape with various building heights and colors of light, including a prominent pink and yellow light structure in the lower-left corner.

Aim 1: Barriers and facilitators to telehealth access

- “Okay. If I use the MyChart, I don't have to get - make an appointment, **get in the car and drive two hours. If you ever drove in Chicago, it's a flipping nightmare...**, but knowing what I know, and what hospitals I have been associated with, I'd be more comfortable if I went to someone with a specialist. And a lot of people don't have that kind of access to people like that because they don't have the insurance, they don't have the ability to get there, they don't have any rides”

Aim 2: Digital Tool Development



Community Advisory Board



01

Telehealth How-To's

Tutorials to help you prepare for your upcoming telehealth follow-up care visit.

02

Follow-up Care Education

Learn how holistic well-being can improve your follow-up care experience.

03

Identify follow-up care needs

Short, private quizzes to identify your needs between follow-up care visits.

04

Where do I go now?

A short list of local and national resources for your follow-up care needs - at your fingertips!



Career development and community-engaged activities- Northwestern University



Career Development

- R01 Development
- American Cancer Society-Research Scholars Grant
- Community-led Takeda Award

Community-engaged activity

- Co-Design Approach
- Paid community-coordinator
- CAB
- Assisted in writing a community-partner-led pilot project
 - Provided qual and IRB training
- Advocacy and Mentorship

Next Steps



**Dissemination in
the community
voice grant**



R01 resubmission



Manuscript writing

Many Thanks

Research Team Members

- Ai Huang, *Project Coordinator*
- Francesca Rosen, *Research Assistant*
- Revika Singh, *MD/MPH Mentee*
- Shawn Trimble, *Project Coordinator*

Funders

- National Cancer Institute
(1K01CA262342)
- Respiratory Health Association
- Northwestern Claude D. Pepper Center

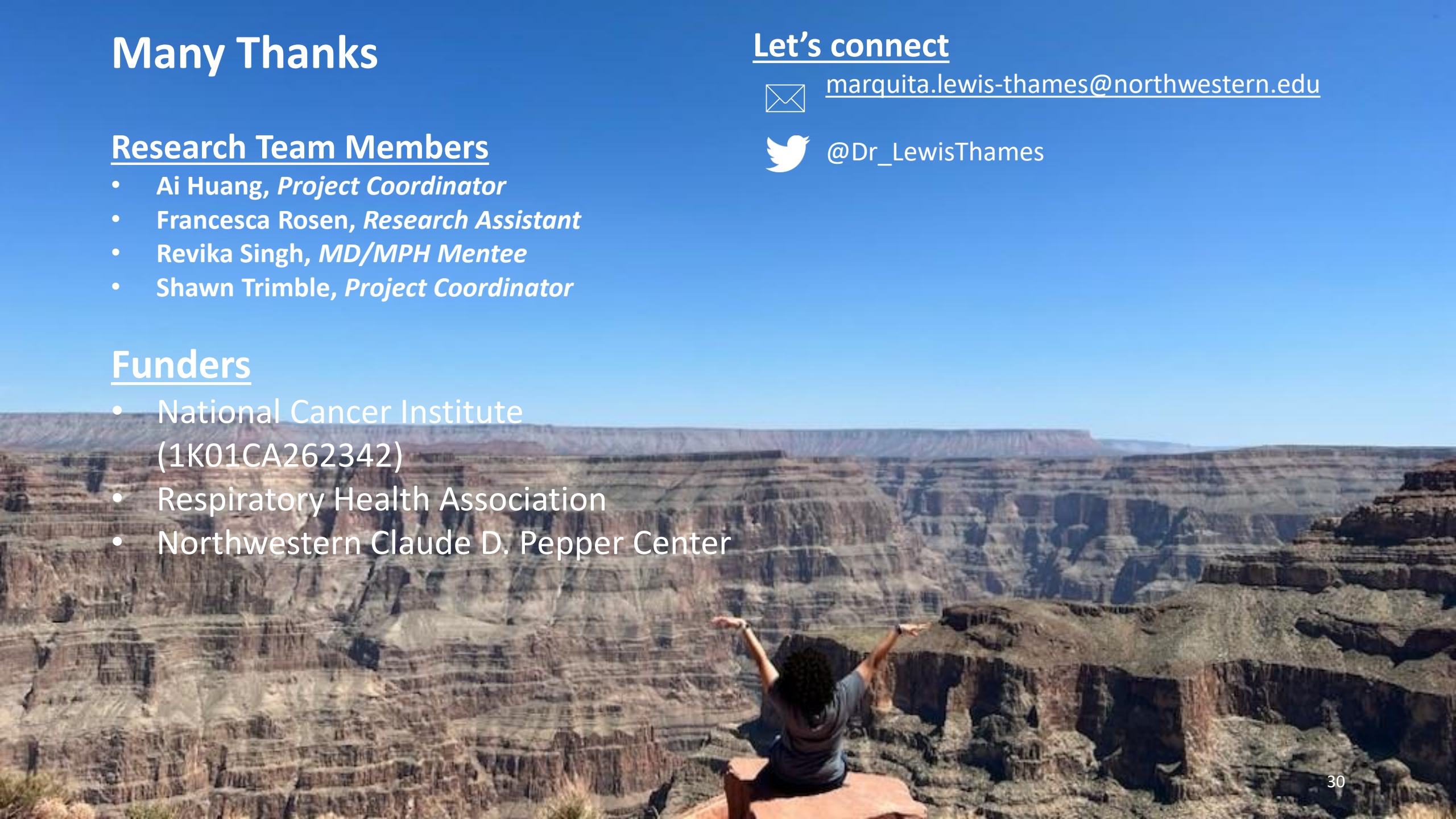
Let's connect



marquita.lewis-thames@northwestern.edu



@Dr_LewisThames



Q&A



CARG
& AGING RES
Infrastructure

Fund

Grant

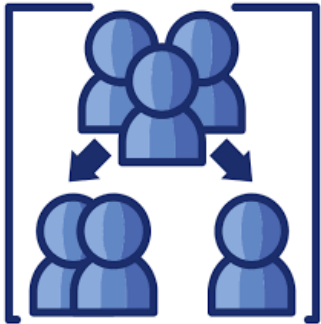
BREAKOUT SESSION



- SPECIFIC AIMS REVIEW
- SPECIFIC AIMS Q&A
- TRANSITION FROM EARLY TO MID-CAREER
- RESILIENCE AND WORK/LIFE BALANCE

FORMAT FOR BREAKOUT GROUP

- All Attendees will be preassigned to a group of 8-10 based on their preference



- Session moderator will:
 - Start session
 - Keep time - 35 mins
- You do not have to use the entire time for one thing
- You are welcome to use the time together to ask questions of senior and midcareer faculty.

BREAKOUT SESSIONS



Specific Aims Review Session: This session is for you to present and receive constructive feedback on your aims page in a small group environment.



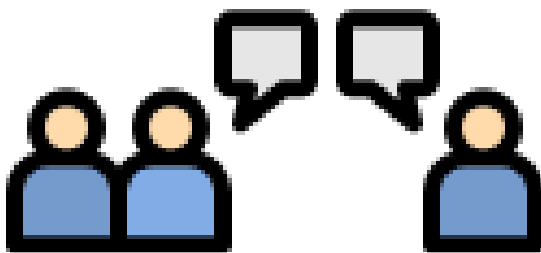
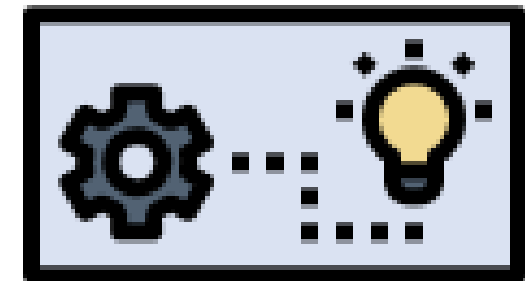
Specific Aims Q & A Session: This session is for you to ask questions related to specific aims and grants to experts in the field.



Transition from Early to Mid-career Session: This session is for you to ask questions regarding transitions from early to mid-career, from a k-level award and on.



Resilience and Work/Life Balance Session: This session is for you to discuss issues and ask questions related to what you view as the major career development challenges you are facing (or will soon face). This may include, but not limited to work/life balance and resiliency, etc.



CARG

ING RESEARCH GROUP

ucture Grant

CLOSING REMARKS

*Special thanks to
our Junior CARG
Co-Chairs and
Board Members*

Thank
you